



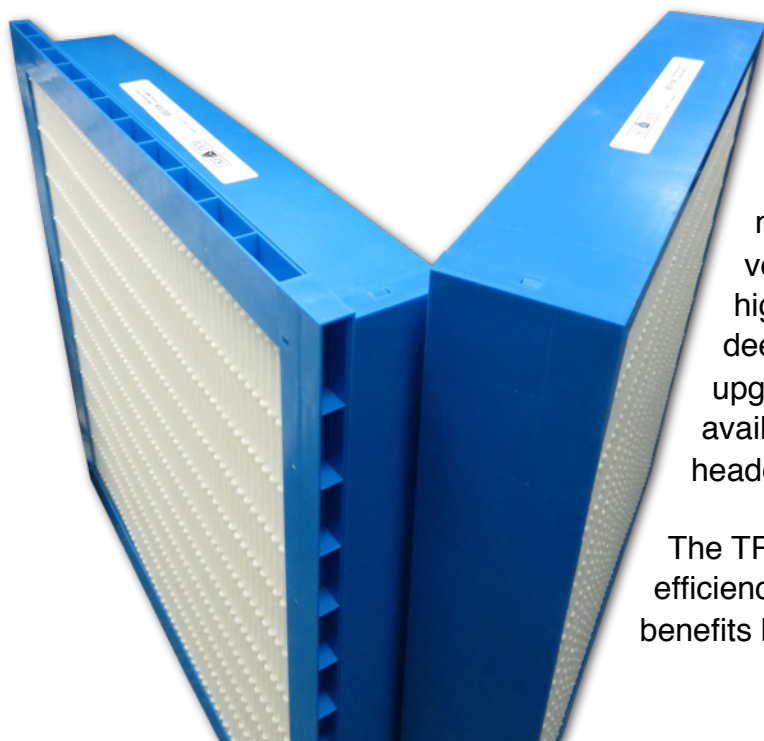
# TRI-CELL™ LR4

MEDIUM AND HIGH EFFICIENCY MINI-PLEAT WITH PLASTIC FRAME

## TRI-CELL LR4

filters are designed utilizing a synthetic media in a mini-pleat configuration with a compact four inch deep plastic frame. The TRI-CELL LR4 offers high efficiency (MERV 11, 13 and 14), a compact footprint, low resistance and many green benefits. The TRI-CELL LR green benefits include a robust plastic frame as an alternative to metal or die-cut cardboard.

The TRI-CELL LR4 media is a high efficiency, synthetic, mini-pleat media



pack that offers lower pressure drop resulting in energy savings. The compact design and low pressure drop allows for easy upgrade and retrofit in existing systems where efficiency upgrades are needed. The small footprint (only 4" deep) is very compact when compared to traditional high efficiency filters that range from 12-36" deep. The MERV 13 (80-85%) is an ideal upgrade for LEED. The TRI-CELL LR4 is available in both a plastic box frame, or a single header frame.

The TRI-CELL LR4 is the superior choice for high efficiency filters with a compact design and green benefits like low resistance and a plastic frame.

# TRI-CELL LR4 SPECIFICATIONS



## Media

Synthetic

## Frame Construction

Plastic - Box and Single Header Versions

## Seal

Perimeter Adhesive Seal

## Efficiency and Initial Resistance @ 500 FPM (2.54 m/sec) for Box Style

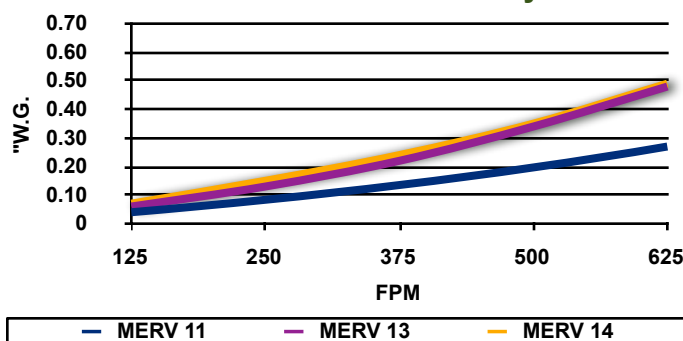
MERV 11	0.19" WG (47 PA)
MERV 13	0.33" WG (82 PA)
MERV 14	0.35" WG (87 PA)

## Recommended Final Resistance

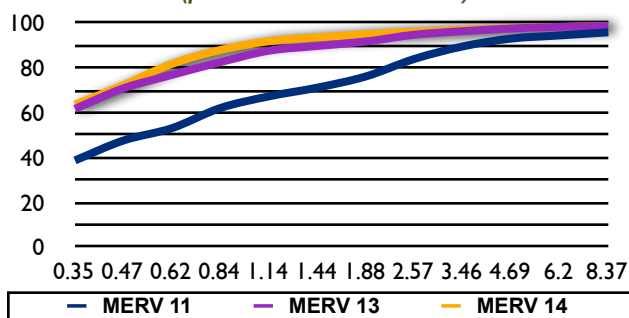
1.5" WG (373 PA)

## MEETS ANSI/UL-900 REQUIREMENTS

Initial Resistance - Box Style



Initial Efficiency by Particle Size  
(per ASHRAE Standard 52.2)



Tri-Dim Filter Corporation is committed to continual product development – all descriptions, specifications and performance data are subject to change without notice. Tri-Dim products are manufactured to exacting criteria - there can be a ±5% variance in filter performance. Tri-Dim® and Tri-Dek® are Registered Trademarks of Tri-Dim Filter Corporation. Tri-Cell™ is a Trademark of Tri-Dim Filter Corporation.



**TRI-DIM**  
FILTER CORPORATION  
P.O. BOX 466 • 93 INDUSTRIAL DRIVE  
LOUISA, VA 23093  
(540) 967-2600 • FAX: (540) 967-2835



## Local Representation:



204 N. Link Lane #7  
Fort Collins, CO 80524  
Office: 970-204-4758 Fax: 970-204-4764  
Brandon@IndustrialFilterSource.com  
IndustrialFilterSource.com

Brochure # 1300-7  
Revision: 06/2014

