

# INNOVATIVE FILTRATION SOLUTIONS

Sonic  
Sealed  
Pockets







**Tri-Dim's SYN-PAC E High Efficiency Extended Surface Class 1 Bag Filter features a progressive density synthetic media that offers high efficiency at a minimal resistance to airflow.**

## **MEDIA**

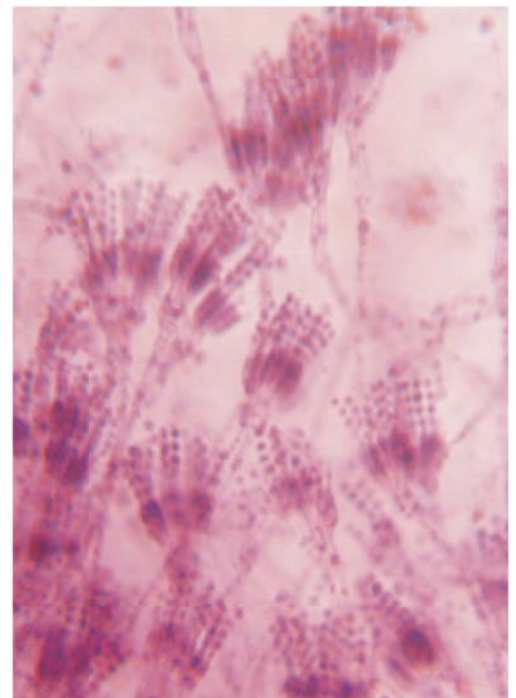
Tri-Dim's SYN-PAC E filters utilize an advanced dual layer meltblown media. The medias dual layers allow for depth loading – that is managing the dirt by capturing larger particles on the 'prefilter' layer and having the second layer focus on removing the smaller 'target' particles. Depth loading results in much higher dirt holding capacity – allowing for longer service life. The final layer of the SYN-PAC E media is a spun bonded scrim backing that supports and protects the filter media.

The combination of high removal efficiency and long service life makes Tri-Dim's SYN-PAC E a great value.

## **MOISTURE AND MICROBIAL RESISTANT**

SYN-PAC E filters are an excellent choice for high humidity and high moisture applications. The fibers and other components of the SYN-PAC E bag filter are unaffected by high humidity or moisture. There is no loss in efficiency or filter deterioration caused by moisture or humidity. Fiberglass bag filters are not recommended in applications where high humidity or moisture might be present.

The Syn-Pac E filter media will not support microbial growth – an added benefit for high moisture and sensitive applications. Optional Antimicrobial Treatment can add even more security.



*Microscopic view of microbial growth*

## CONSTRUCTION

Tri-Dim's SYN-PAC E filters are constructed in a controlled environment with the highest level of quality. The pockets on standard size bags are sonically sealed to provide maximum strength and a leak free seal. Aerodynamic channels inside the pockets ensure proper inflation of pockets and to maximize media utilization.

The pockets are secured to double turned galvanized hoops that are secured to a roll formed header. This process prevents the bypass of unfiltered air and adds rigidity.

Tri-Dim's manufacturing process ensures the highest quality product.



## OPTIONS

**Efficiency** – SYN-PAC E is available in four efficiencies – 40-45% (MERV 10), 60-65% (MERV 12), 80-85% (MERV 14) and 90-95% (MERV 15).

**Standard Sizes** – SYN-PAC E Extended Surface filters are offered in 41 standard size options – including five different pocket depths, five different height and width options and six options of the number of pockets.

**Custom Sizes** – In addition the SYN-PAC E is available in virtually any combination of height, width, depth and number of pockets. There are some restrictions so please consult with the factory for availability.

**Antimicrobial** – SYN-PAC E comes with an optional antimicrobial treatment that is EPA registered. The antimicrobial is effective in inhibiting the growth of a large variety of microorganisms including bacteria, fungi, viruses and other microbials.



**Wire Support** – The wire support option allows for the continual support of the pockets by a series of wires attached to the back of the pockets and to the bottom of the header (see *photo left*). This support allows for the operation of the SYN-PAC E bag filters at a lower operating resistance and with enhanced dirt holding capacity. The wire support filters are ideal for use in VAV or other systems where airflow may not properly inflate the pockets in order to gain the maximum performance from the filters.



# SPECIFICATIONS

## EFFICIENCY

### 40-45%

ASHRAE 52.1 Dust Spot Initial	42.3%
ASHRAE 52.1 Dust Spot Average	54.2%
ASHRAE 52.2	MERV 10 @ 492 FPM

### 60-65%

ASHRAE 52.1 Dust Spot Initial	59.5%
ASHRAE 52.1 Dust Spot Average	67.0%
ASHRAE 52.2	MERV 12 @ 492 FPM

### 80-85%

ASHRAE 52.1 Dust Spot Initial	80.7%
ASHRAE 52.1 Dust Spot Average	86.2%
ASHRAE 52.2	MERV 14 @ 492 FPM

### 90-95%

ASHRAE 52.1 Dust Spot Initial	86.8%
ASHRAE 52.1 Dust Spot Average	91.3%
ASHRAE 52.2	MERV 15 @ 492 FPM

## TEMPERATURE LIMIT

150-175° F (65-80° C)

## FINAL RESISTANCE

1.50"W.G. (373 PA)

**Meets ANSI/UL 900  
Requirements**

## SQUARE FEET OF MEDIA

<b>24x24x22 8 Pocket</b> 610x610x559	<b>58 sq. ft.</b> 5.4 m <sup>2</sup>
<b>12x24x22 4 Pocket</b> 305x610x559	<b>29 sq. ft.</b> 2.7 m <sup>2</sup>
<b>24x24x26 8 Pocket</b> 610x610x660	<b>69 sq. ft.</b> 6.4 m <sup>2</sup>
<b>12x24x26 4 Pocket</b> 305x610x660	<b>35 sq. ft.</b> 3.3 m <sup>2</sup>
<b>24x24x30 8 Pocket</b> 610x610x762	<b>80 sq. ft.</b> 7.4 m <sup>2</sup>
<b>12x24x30 4 Pocket</b> 305x610x762	<b>40 sq. ft.</b> 3.7 m <sup>2</sup>
<b>24x24x36 8 Pocket</b> 610x610x914	<b>96 sq. ft.</b> 8.9 m <sup>2</sup>
<b>12x24x36 4 Pocket</b> 305x610x914	<b>48 sq. ft.</b> 4.5 m <sup>2</sup>

*Please note that other sizes, depths and pocket combinations are available. Filter depth is measured from the front of the header to the end of the pocket, excluding hoops. Depth dimensions have a ± 1/2" tolerance.*

## OPTIONS

**GPA Adaptor** – Syn-Pac E Bag Filters come with the option of a GPA Header to allow for easy, time saving installation into Glide/Pack® housings.

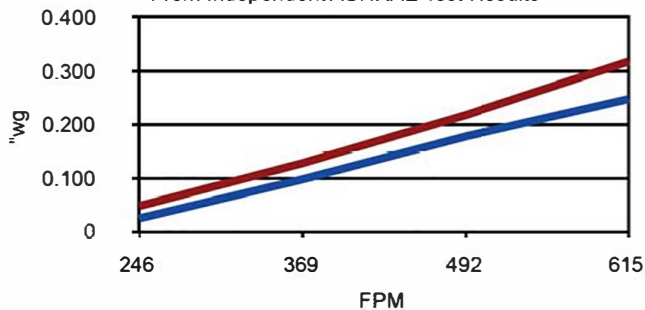
**Gasketing** – Charcoal Ether Foam Gasketing is available on vertical sides, horizontal sides, upstream face or downstream face of header.

## RESISTANCE TO AIRFLOW

40-45% AND 60-65%

24x24x30 8-Pocket

From Independent ASHRAE Test Results



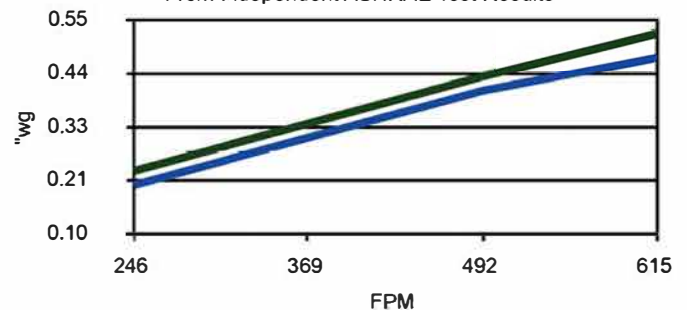
— 40-45% — 60-65%

## RESISTANCE TO AIRFLOW

80-85% AND 90-95%

24x24x30 8-Pocket

From Independent ASHRAE Test Results



— 80-85% — 90-95%

Tri-Dim Filter Corporation is committed to continual product development – all descriptions, specifications and performance data are subject to change without notice.

Tri-Dim products are manufactured to exacting criteria – there can be a ±5% variance in filter performance. Tri-Dim® and Tri-Dek® are Registered Trademarks of Tri-Dim Filter Corporation.



**TRI-DIM FILTER CORPORATION**  
P.O. BOX 466 • 93 INDUSTRIAL DRIVE  
LOUISA, VA 23093  
(540) 967-2600 • FAX: (540) 967-2835



204 N. Link Lane #7  
Fort Collins, CO 80524  
Office: 970-204-4758 Fax: 970-204-4764  
Brandon@IndustrialFilterSource.com  
IndustrialFilterSource.com

Brochure # 1100-5  
Revision: 01/2013

