



Tri-Lock HF4™

MODULAR FILTER HOLDING FRAMES FOR HEPA FILTERS

FEATURES:

- ☑ **Heavy Duty**
- ☑ **Modular**
- ☑ **Clamping Arms or Swing Arms on Each Corner**
- ☑ **Gasket or Gel Seal HEPA Filters**
- ☑ **Two Standard Depths of Filters**
- ☑ **16 Gauge Galvanized or Stainless Steel Construction**
- ☑ **Welded Construction**
- ☑ **Two Styles**
- ☑ **Self-Aligning Holes**
- ☑ **Dimples Provide Self-Centering Filters**

The TRI-LOCK™ HF/HF4 is a modular, heavy-duty HEPA filter holding frame with removable clamping arms that can be utilized in new construction or in renovation projects.

The TRI-LOCK™ holding frames are offered in two different styles and both come in two standard depths to hold a 5-⁷/₈ and 11-¹/₂ inch deep HEPA filters. Both TRI-LOCK™ HF/HF4 frames are available for either gasket or gel seal HEPA filters.

Both styles of the TRI-LOCK™ HEPA holding frames are constructed of 14 gauge galvanized steel or optional 14 gauge stainless steel. All joints are continuous welded and free from all burrs and sharp edges to prevent damage to filters.

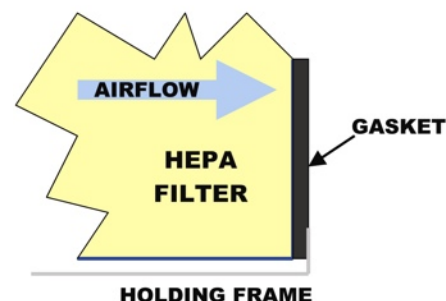
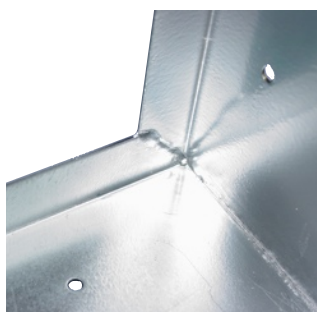
The standard TRI-LOCK HF™ frame offers a frame body that is 8 inches deep and utilizes removable clamping arms located in each corner. The TRI-LOCK HF4™ is a 3-³/₄ inch deep frame and utilizes removable swing arms located in each corner. The clamping and swing arms securely compress the filter against the frame reducing the potential for air bypass. Both frames are available for gasket or gel seal applications and in either galvanized or stainless steel construction.

Both of the TRI-LOCK™ HEPA holding frames are designed for easy modular assembly by either pop riveting or by using nuts and bolts through the self-aligning installation holes that are predrilled during manufacturing. Frames include dimples that provide self-alignment of HEPA filters.

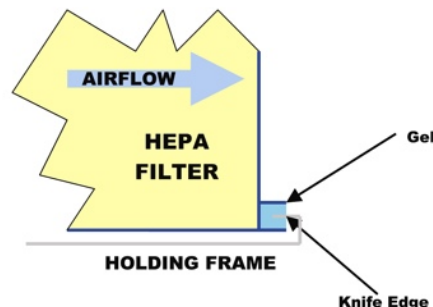
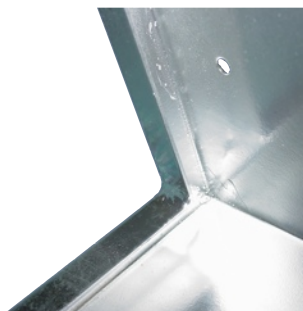


Tri-Lock HF™

GASKET SEAL DETAIL



GEL SEAL DETAIL



Tri-Dim recommends that stiffener bars be used when the TRI-LOCK HF™ bank is more than three rows high. Stiffener bars should be used every two rows and should be riveted or bolted between frames. All cracks between frames, ductwork and stiffener bars should be sealed with RTV sealant.

TRI-LOCK HF™ SPECIFICATIONS

ACTUAL HOLDING FRAME SIZE (Inches)	DEPTH HF FRAME (Inches)	DEPTH HF4 FRAME (Inches)	ACTUAL FILTER SIZE FOR FRAME (Inches)
12 x 24	8	3- ³ / ₄	11- ³ / ₈ x 23- ³ / ₈ x 11- ¹ / ₂
24 x 12	8	3- ³ / ₄	23- ³ / ₈ x 11- ³ / ₈ x 11- ¹ / ₂
12- ⁵ / ₈ x 24- ⁵ / ₈	8	3- ³ / ₄	12 x 24 x 11- ¹ / ₂
24- ⁵ / ₈ x 12- ⁵ / ₈	8	3- ³ / ₄	24 x 12 x 11- ¹ / ₂
24 x 24	8	3- ³ / ₄	23- ³ / ₈ x 23- ³ / ₈ x 11- ¹ / ₂
24- ⁵ / ₈ x 24- ⁵ / ₈	8	3- ³ / ₄	24 x 24 x 11- ¹ / ₂

Note: Depth of Tri-Lock HF and HF4 Holding Frame does not include Removable Clamping Arms

Tri-Dim Filter Corporation is committed to continual product development – all descriptions, specifications and performance data are subject to change without notice.

Tri-Dim products are manufactured to exacting criteria - there can be a ±5% variance in filter performance. Tri-Dim® and Tri-Dek® are Registered Trademarks of Tri-Dim Filter Corporation.



TRI-DIM FILTER CORPORATION
P.O. BOX 466 • 93 INDUSTRIAL DRIVE
LOUISA, VA 23093
(540) 967-2600 • FAX: (540) 967-2835



Local Representation:



204 N. Link Lane #7
Fort Collins, CO 80524
Office: 970-204-4758 Fax: 970-204-4764
Brandon@IndustrialFilterSource.com
IndustrialFilterSource.com.

BROCHURE #2500-7
Revision: 05/2015

