

INNOVATIVE

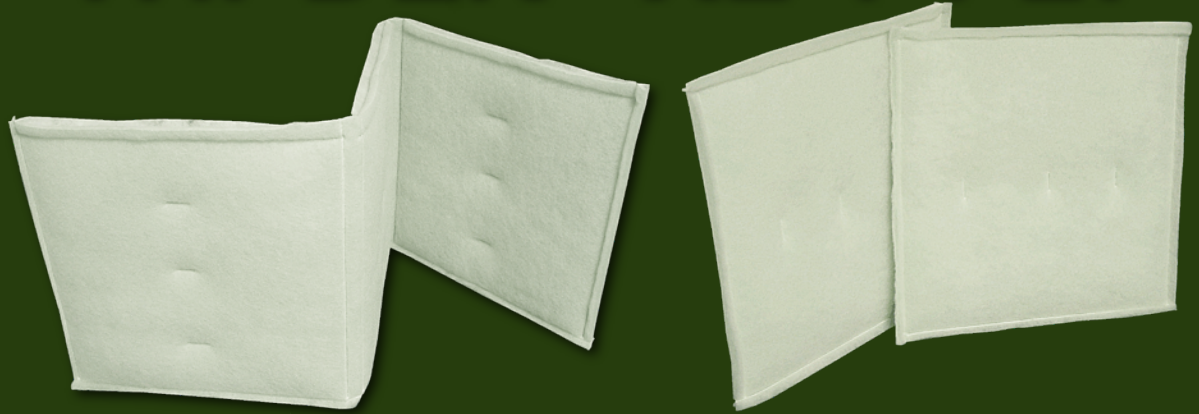


TRI-DEK® XL 4-PLY

MEDIUM EFFICIENCY PANEL AND LINK FILTERS



TRI-DEK® XL 4-PLY



TRI-DEK® MEDIA - utilizes different medias that are arranged from coarse to fine that allow the filter to capture the largest particles on the upstream side and finer particles as the air moves through the filter media. Tackifiers are used to enhance efficiency and to prevent particle migration.

This 'Depth-Loading' allows for Tri-Dek panels to outperform traditional pleated filters by offering a longer service life. A longer service life translates into less filters to buy, install and dispose of ... this equals cost savings.



In addition the 4-Ply TRI-DEK XL media contains 24% post-consumer recycled fiber content. This helps with achieving Green Initiative goals - like LEED® Certification.



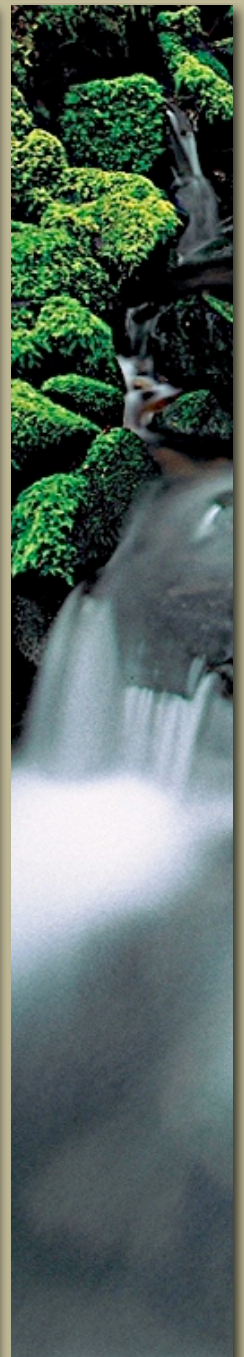
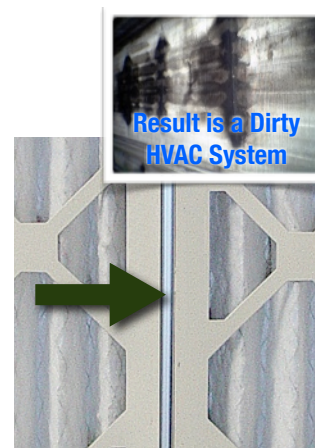
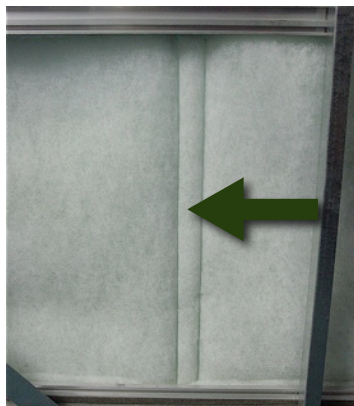
Cross Section of Media

BYPASS OF UNFILTERED AIR - is a huge undetected and costly problem in most HVAC systems. Cardboard framed filters do

not seal between each other allowing unfiltered air through.

Another common issue are filters

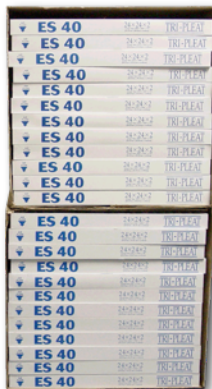
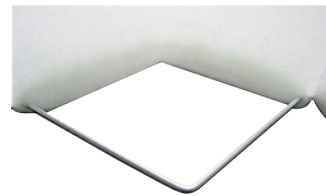
that do not completely fill up the track - allowing gaps of several inches. TRI-DEK Panels/Links are self-sealing and can be manufactured to fill the entire filter track providing a cost savings.



EFFICIENCY - TRI-DEK XL Series offers exceptional removal efficiency not only in a test laboratory – but also in ‘real world’ applications. How a filter performs in a test laboratory under controlled conditions is important but what is more important is how a filter performs in the unpredictable and uncontrolled ‘real world’ applications.

Independent infield tests have documented MERV 10-11 efficiencies from Tri-Dim's TRI-DEK XL Panel filters in ‘Real World’ applications.

CONSTRUCTION - TRI-DEK Panel and Link Filters are constructed out of filter media and a heavy-duty wire frame for support - that's it - no cardboard frame, wire backing or adhesives. This makes TRI-DEK a very tough and durable filter so shipping and handling damage is minimized.



Cardboard framed filters, like pleated filters, are easily damaged and are only packed 12 per case. TRI-DEK filters are packed 24 per case (see photos left) - this is 50% reduction in storage, freight costs and the number of trips back and forth to the air handler during change-outs.

MOISTURE / MOLD RESISTANT -

Cardboard framed filters are vulnerable to the effects of moisture. Moisture can cause premature filter failure - the frame becomes wet and will buckle under the pressure of the system (as pictured top right). If the filter remains wet and conditions are correct mold and other microbials can easily grow - see photo lower right.

Since TRI-DEK uses no cardboard but relies on an internal wire ring for support - this creates a filter that is resistant to moisture/mold and will save you money by reducing costly abatement.



ECONOMICAL

Specifications

MEDIA	Synthetic, 4 deniers
FRAME	Galvanized Wire
SEAL	Thermally generated

RESISTANCE

0.08" W.G. @ 125 FPM (20 PA @ 0.64 m/sec)
0.19" W.G. @ 250 FPM (47 PA @ 1.27 m/sec)
0.34" W.G. @ 375 FPM (85 PA @ 1.91 m/sec)
0.51" W.G. @ 500 FPM (127 PA @ 2.54 m/sec)
0.70" W.G. @ 625 FPM (174 PA @ 3.18 m/sec)

MEETS ANSI/UL-900 REQUIREMENTS

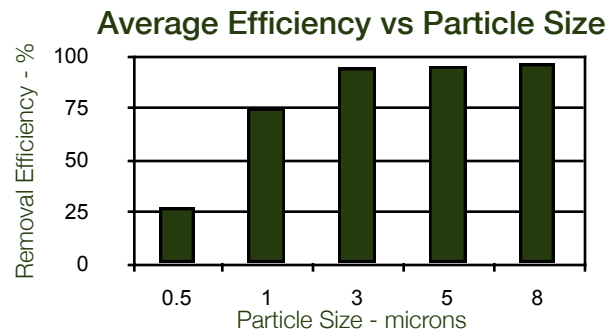
OPTIONS

LINK – Individual panels that are connected or 'linked' together to form a linked filter that will fit from 'door-to-door' and eliminates gaps and metal spacers.

ALAP – A case of linked panels.

TRI-DEK ROLL-UP – Miniature sized panels linked together to allow for use in tight spaces where a standard size filter cannot fit without being bent.

ANTIMICROBIAL TREATMENT – EPA Approved treatment to control the growth of microbials within the filter.



Tri-Dim Filter Corporation is committed to continual product development – all descriptions, specifications and performance data are subject to change without notice.

Tri-Dim products are manufactured to exacting criteria - there can be a $\pm 5\%$ variance in filter performance.

Tri-Dim® and Tri-Dek® are Registered Trademarks of Tri-Dim Filter Corporation.

DURABLE



TRI-DIM FILTER CORPORATION
P.O. BOX 466 • 93 INDUSTRIAL DRIVE
LOUISA, VA 23093
(540) 967-2600 • FAX: (540) 967-2835



Local Representation:



204 N. Link Lane #7
Fort Collins, CO 80524
Office: 970-204-4758 Fax: 970-204-4764
Brandon@IndustrialFilterSource.com
IndustrialFilterSource.com

Brochure # 600-1
Revision: 07/2010

